

SIZE: 0.3-2.5 m tall.

LEAVES: Few (1-3), stiffly erect and restricted to the base and the lower portion of the stem. They are 3 to 15 cm long, less than 1 cm wide and are deeply channelled or v-shaped (particularly near the base).

STEM: Straight, sharply triangular stem (culm), 3-10 mm wide, often with deeply concave sides which give the stem three pronounced ridges.

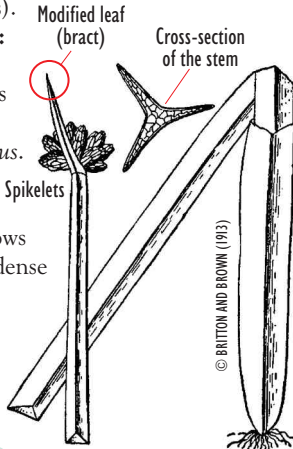
FLOWERS: 2-20 spikelets in a compact cluster, each 6-15 mm long. The spikelets are surpassed by a modified leaf (bract), 1-5.5 cm long, which is stiffly erect and looks like a continuation of the stem.

FRUITS: Dry, one-seeded fruits (achenes).

NOTES:

Also known as *Scirpus americanus*.

This species often grows in large dense stands.

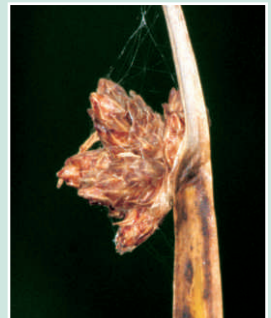


© MARTIN THOMAS



Flowering spikelets

© MARTIN THOMAS



Spikelets

© ALAIN BELLIEAU

Habitat:

Salt marshes, typically in wet brackish soils at the edge of the marshes.

Interesting point: This species was traditionally used to make woven baskets, bags, and hats. Its seeds are high in protein and can be ground and mixed with flour for baking.

Similar species: Three-square Bulrush (*Schoenoplectus pungens*) has a triangular stem that is not concave and does not have pronounced ridges. Hard-stemmed Bulrush (*Schoenoplectus acutus*) and Soft-stemmed Bulrush (*Schoenoplectus tabernaemontani*) can occur in brackish wetlands but are taller with round stems. Other similar bulrushes do not occur in salty or brackish habitats.



Dense stand of Olney's Bulrush

© SEAN BLANEY